



PU220-04

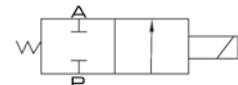
PU220-06

PU220-08

Ordering Code

PU	220	01	AC110V	E
Specification PU 2/2 Way	Operation 220: Direct	Port Size 01: 1/8" 02: 1/4" 03: 3/8" 04: 1/2" 06: 3/4" 08: 1"	Standard Voltage DC12V DC24V AC24V 50Hz/60Hz AC110V 50Hz/60Hz AC220V 50Hz/60Hz AC380V 50Hz/60Hz	Sealing Blank: NBR E: EPDM for steam V: VITON (for high temperature, gas, vacuum)

Symbol

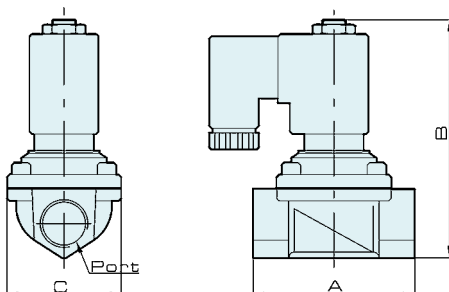


Specification

Model	PU220-01	PU220-02	PU220-03	PU220-04	PU220-06	PU220-08
Working Medium	Air, Water, Oil					
Operation	Direct					
Type	Normal Close					
Orifice	1.5 mm	2.3 mm	8.0 mm	13 mm	20 mm	25 mm
CV Value	0.10	0.18	1.00	4.00	8.60	11.00
Port Size	1/8"	1/4"	3/8"	1/2"	3/4"	1"
Operation Fluid Viscosity	Below 50 CST					
Working-pressure	0 ~ 0.7 MPa					
Max. Test Pressure	1.05 MPa					
Max. Ambient Temperature	-5 ~ 80 °C					

Overall Dimension

PU



Dimension

Model	Bore	A	B	C
PU 220-01	1/8	22	72	22
PU 220-02	1/4	35	75.5	25.4
PU 220-03	3/8	55	79.5	30
PU 220-04	1/2	66.5	101	48
PU 220-06	3/4	71	107	48
PU 220-08	1	96	120	70

Valve

4V100
4V200
4V300
4V400
Manifold
3V1
JEL
JZF
MVSD
VF, VZ
BM, PU, AM
Diaphragm

Coil
2V
2W
2W(Big)
2P
2L
VX
PU

PU225
2Q
JEL5404
JEL6213
Pulse
JEL, JZF
4H
TSV86
MPV
4HV
HV, K
4R
4F
MSV
JM
ASC, RE
QE, QEA
ST
HSV